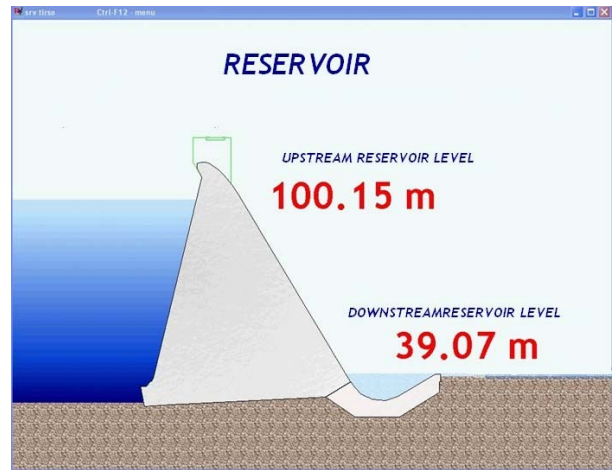


SAFEDAM THE DAM SCREEN SAVER



SafeDam, is a simple and easy tool, extremely useful to operators and is part of the OverSight family of software.

It shows, in real time, only the basic information required for dam control. On just one display, used as permanent

screen saver, is given intuitive information on the reservoir level, flows, state of flood control outlet works etc.

The Client/user can determine which information they wish to have displayed.

OUTFLOW

13/06/2006 10:30 a.m.

• GATED SPILLWAY n.1	32 m ³ /sec	with 50 cm opening (13%)
• GATED SPILLWAY n.2	32 m ³ /sec	with 50 cm opening (13%)
• OVERFLOW SPILLWAY from 1 to 6	0 m ³ /sec	UPSTREAM RESERVOIR LEVEL
• INTAKE FOR HYDROELECTRICITY	20 m ³ /sec	100,15 m a.s.l.
• INTAKE FOR IRRIGATION	20 m ³ /sec	DOWNSTREAM RESERVOIR LEVEL
		39,07 m a.s.l.
TOTAL	104 m³/sec	

SOFTWARE

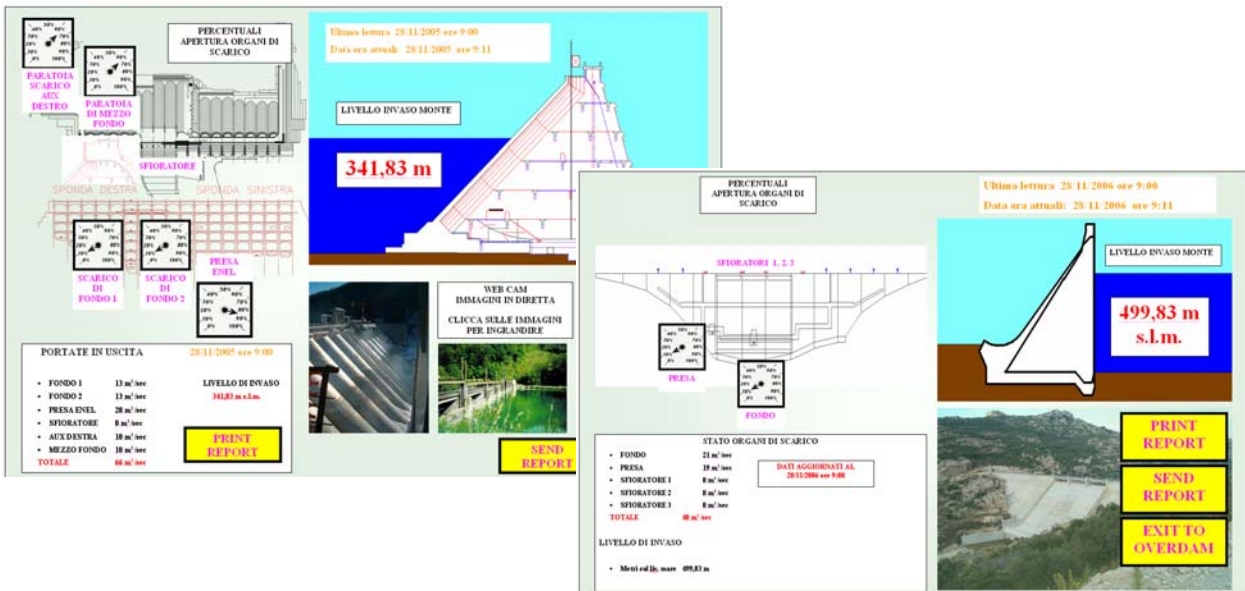


Before attempting to install the software please ensure your equipment meets the minimum system requirements

MINIMUM SYSTEM REQUIREMENTS

SAFEDAM

Processor	Pentium IV or AMD equivalent
Operative System (Microsoft)	Windows 2000, NT, XP Professional SP2
RAM	512 Mb



Agisco reserve the right to change their products and specifications without notice

AGISCO s.r.l.

Via A. Moro 2 - 20060 LISCATE (MI) Italia

Tel. +39 02 9587690 - Fax. +39 02 9587381

www.agisco.it - agisco@agisco.it